

NOTES

COPYRIGHT
 Not to be reproduced without
 written permission

All stone beds and joints to be
 3mm except where stated.

All dimensions/
 details clouded
 as such to be
 confirmed.

Dimension styles:

Stone type:
 This drawing to be read in
 conjunction with drawing nos :
 GA005, GA006/1, GA007

This drawing has been prepared
 from Architects drawing nos :
 A101, A102, A103, A104, A105
 A201
 A341, A343

and Structural Engineers drawing
 nos:

- Stake Ground Base Bed
- Stainton
- Outline of concrete structure

- 5 25.1.01 Stone No's added.
- 4 17.1.01 New plinth.
- 3 3.3.00 Amended plinth.
- 2 11.10.99 Stone dim by lift shaft on return elevation on Grid Line E revised from 100 to 183mm due to concrete mis-casting.
- 1 13.8.99 Revised in line with Architects returned and marked up drawings. Fixings, DPC's and insulation added.

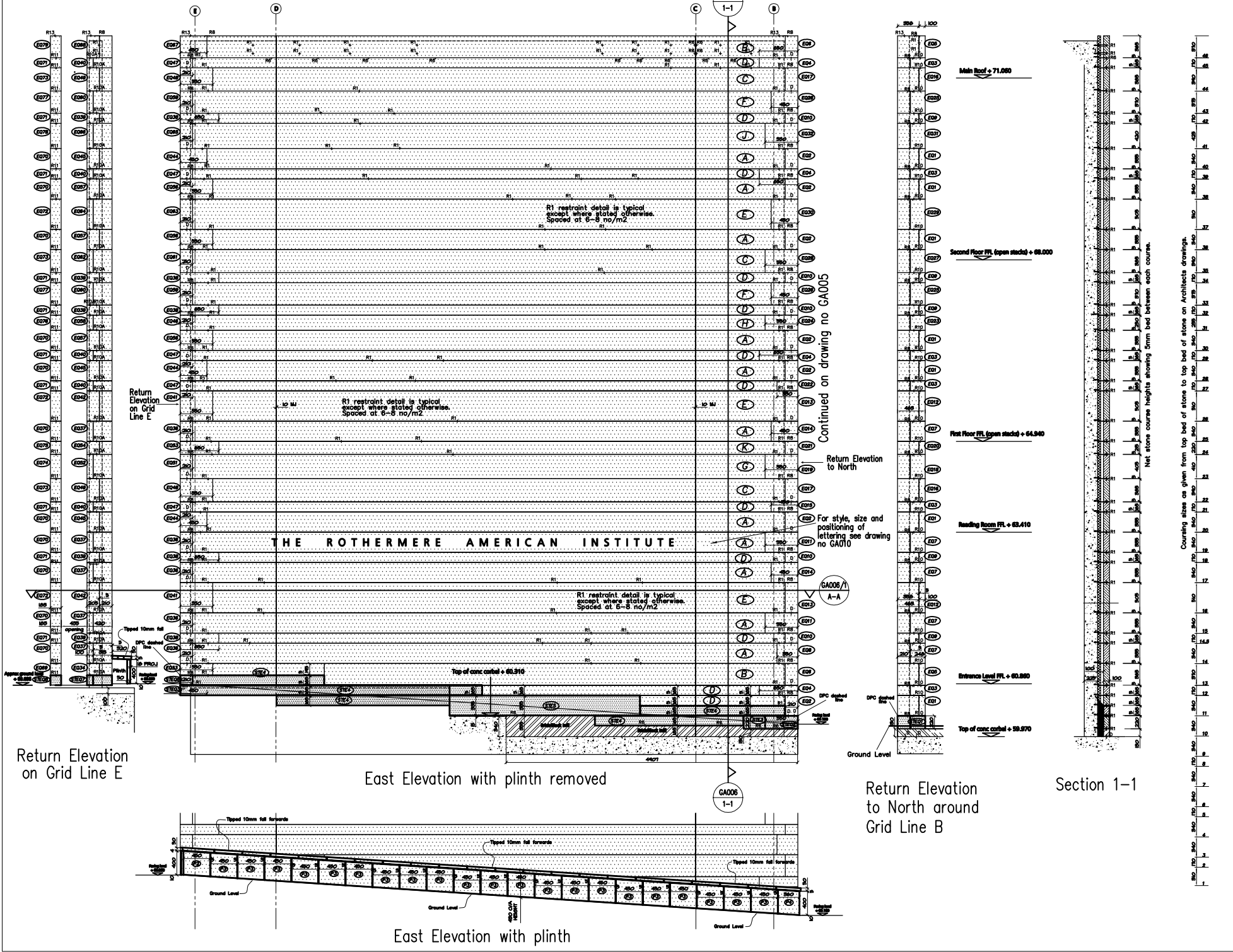
REV.	DATE	AMENDMENT
NOTE - DO NOT SCALE FROM THIS DRAWING		

PROJECT
 The Rothermere American Institute
 South Parks Road
 Oxford

DRAWING TITLE
 East Elevation
 Grids A-E
 Garden Level to roof level.

The Bath Stone Group
 Stoke Hill Mine
 Midford Lane
 Limpley Stoke
 Nr Bath,
 BA3 6JR.

DRAWN BY: AGM
 SCALE: 1:20
 DRAWING SIZE: A0
 DATE: 28th June 1999
 DRAWING No: GA006 REV. 5



Return Elevation on Grid Line E

East Elevation with plinth removed

East Elevation with plinth

Return Elevation to North around Grid Line B

Section 1-1

Continued on drawing no GA005

For style, size and positioning of lettering see drawing no GA010

GA006/1 A-A

Counting sizes as given from top bed of stone to top bed of stone on Architects drawings.

Net stone course heights showing 3mm bed between each course.

Main Roof + 71.000

Second Floor FFL (open stacks) + 68.000

First Floor FFL (open stacks) + 64.940

Heading Room FFL + 63.410

Entrance Level FFL + 60.880

Top of conc. corbel + 59.970

Ground Level