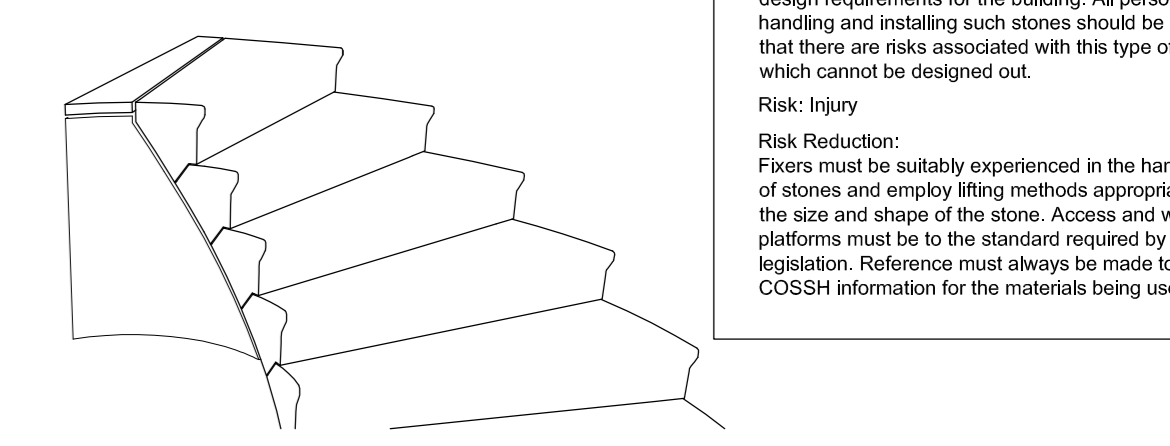
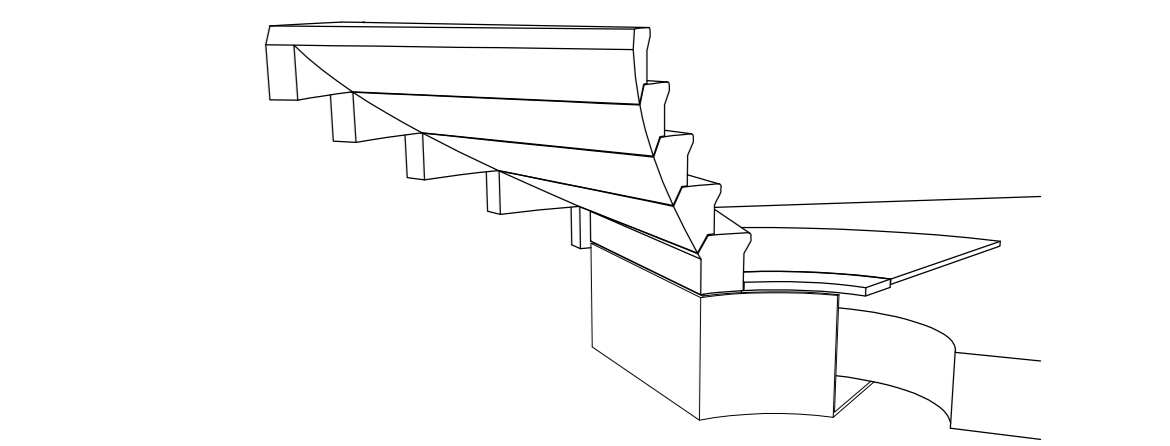


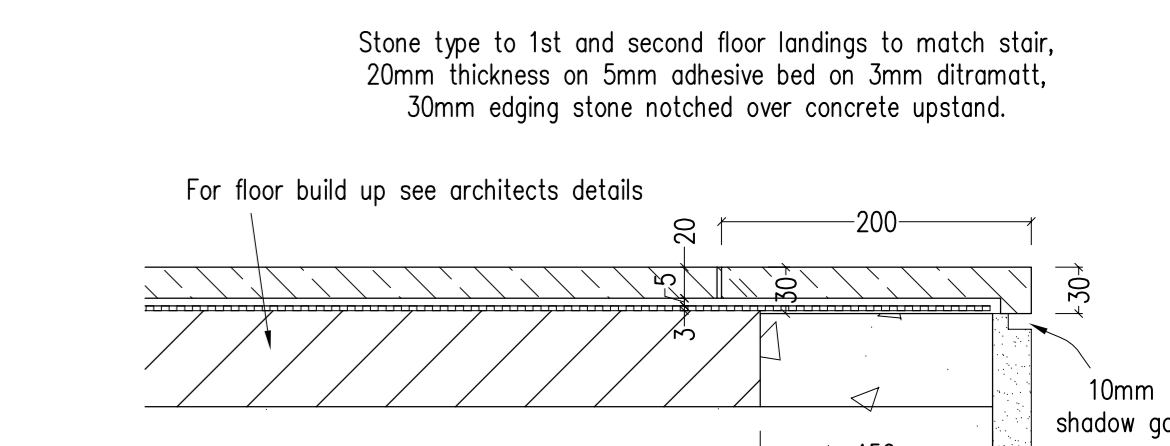
Notes:  
 Do Not Scale From Drawing  
 All interfacing construction details are the responsibility of the main contractor.  
 All interfacing works are to be coordinated by the main contractor.  
 CDM REGULATIONS  
 DESIGN RISK ASSESSMENT  
 The size and shape of individual stones for this project have been designed to satisfy the overall design requirements for the building. All persons handling and installing such stones should be aware that there are risks associated with this type of work, which cannot be designed out.  
 Risk: Injury  
 Risk Reduction:  
 Pavers must be suitably experienced in the handling of stones and employ lifting methods appropriate to the size and shape of the stone. Access and working platforms must be to the standard required by current legislation. Reference must always be made to COSHH information for the materials being used.



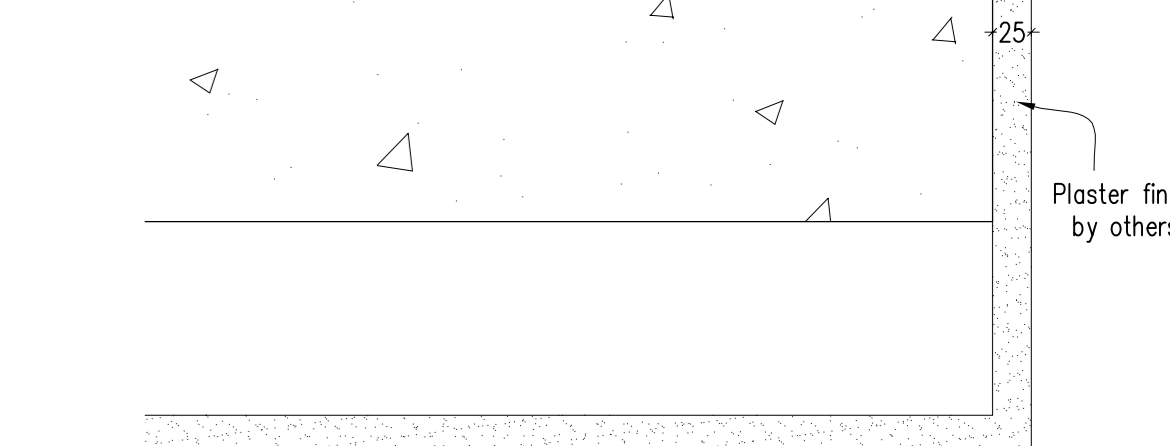
Typical detail of plaster interfaces with stair/landing



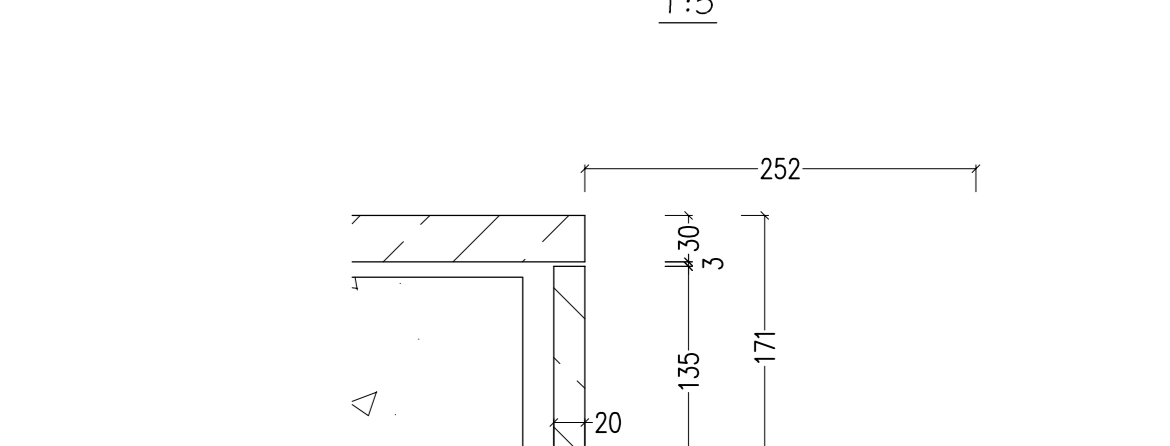
Stone type to 1st and second floor landings to match stair, 20mm thickness on 5mm adhesive bed on 3mm diatomat, 30mm edging stone notched over concrete upstand.



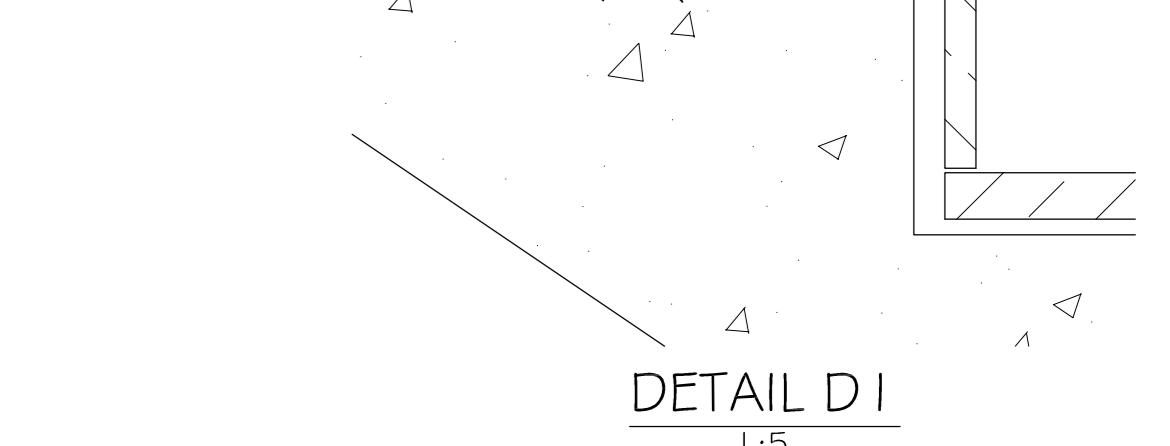
SECTION 5-5  
1:5



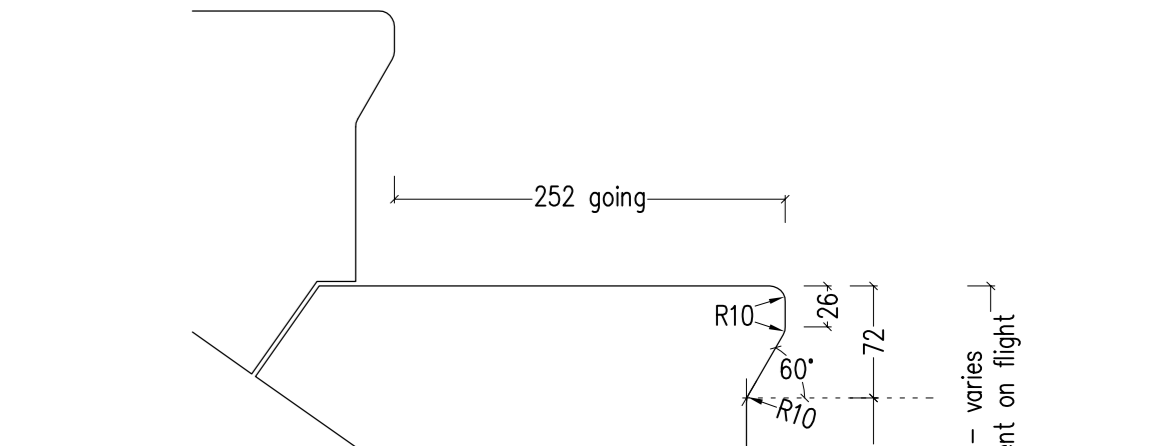
SECTIONAL ELEVATION 4-4



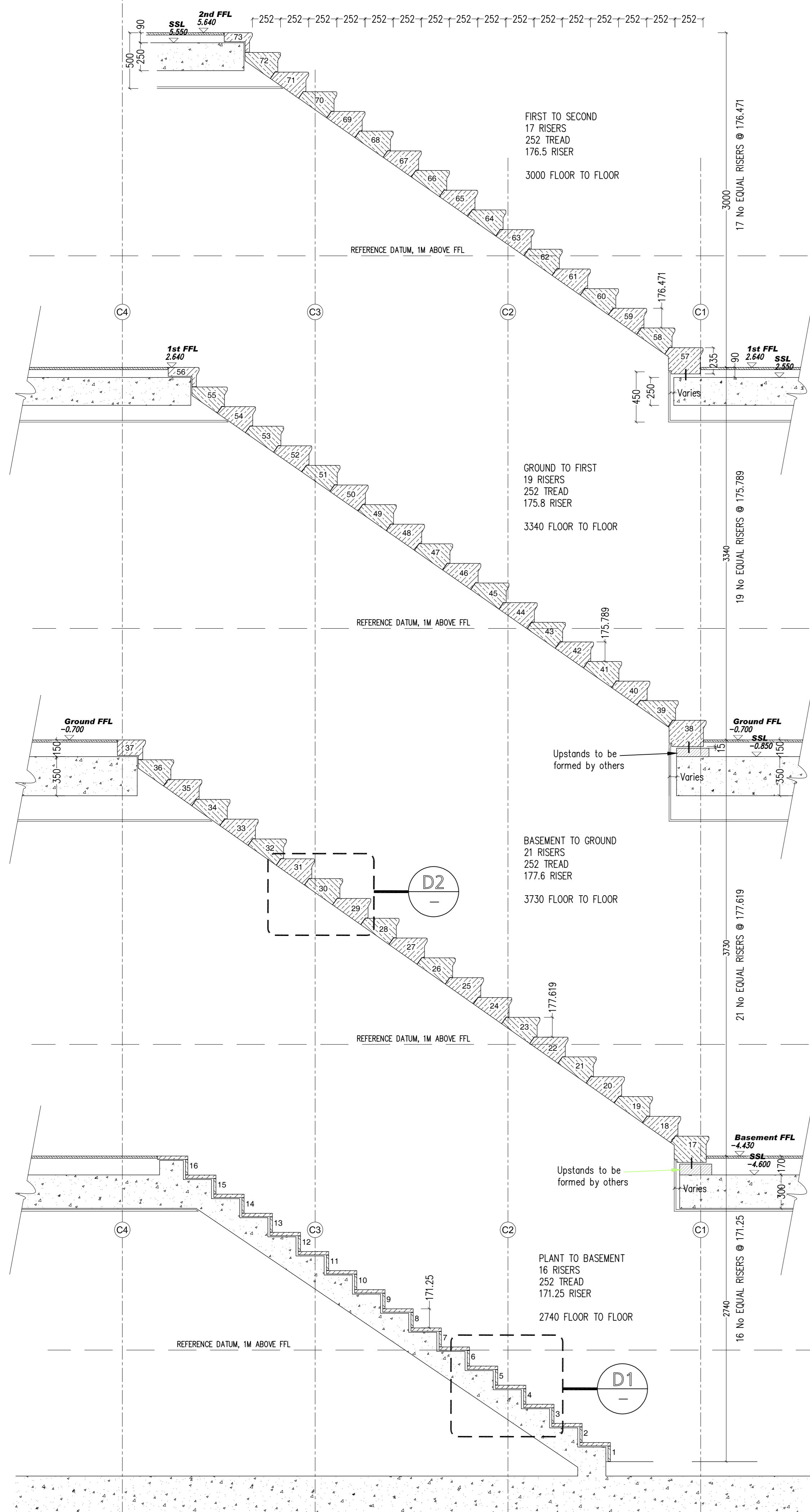
SECTIONAL ELEVATION 3-3



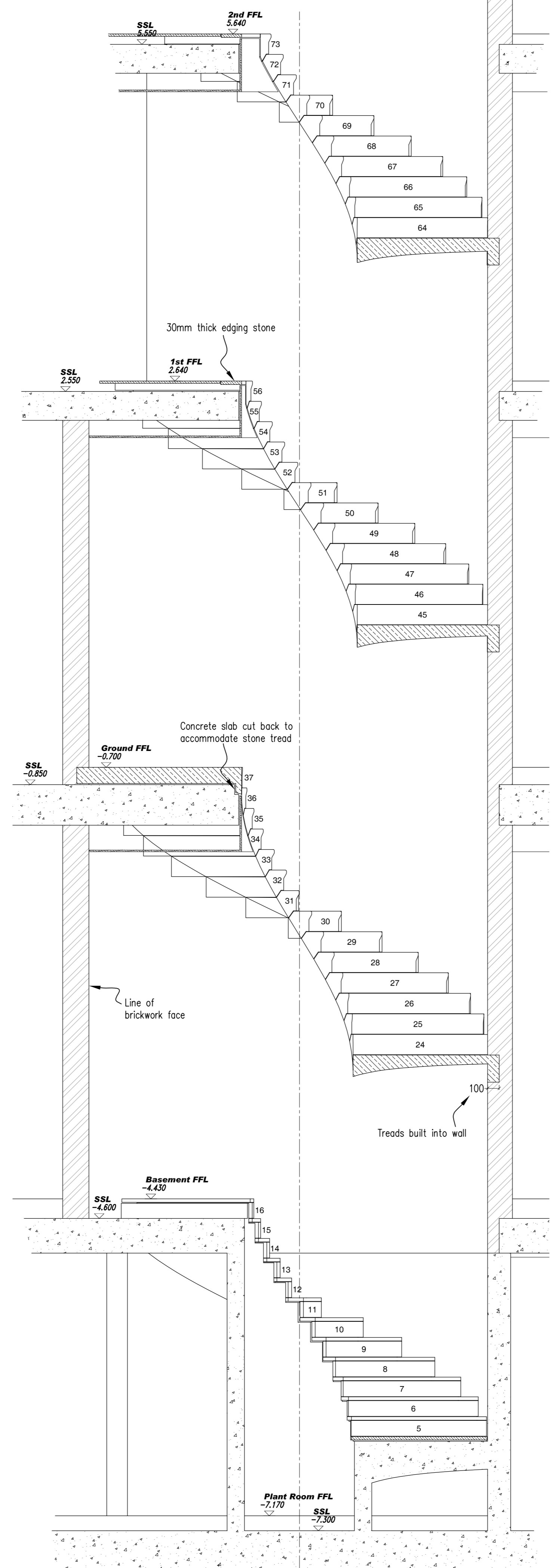
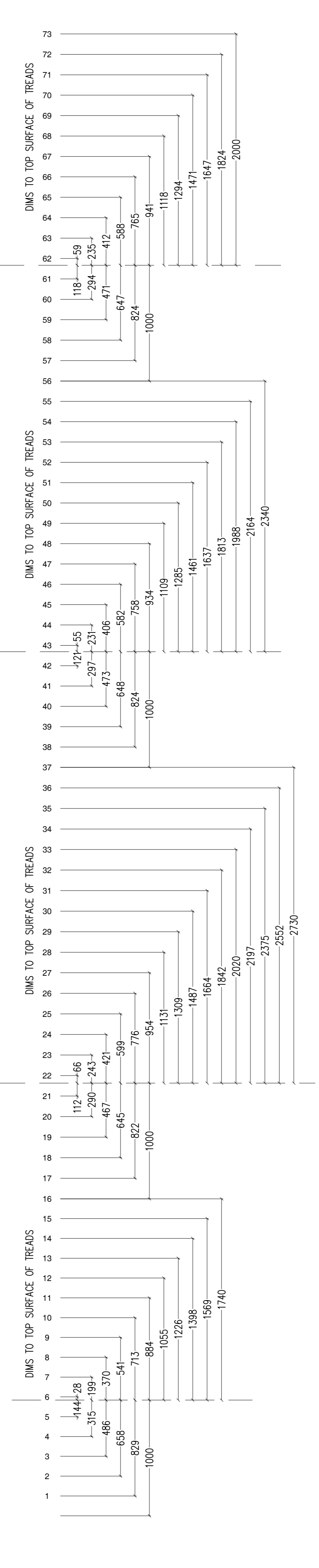
DETAIL D1  
1:5



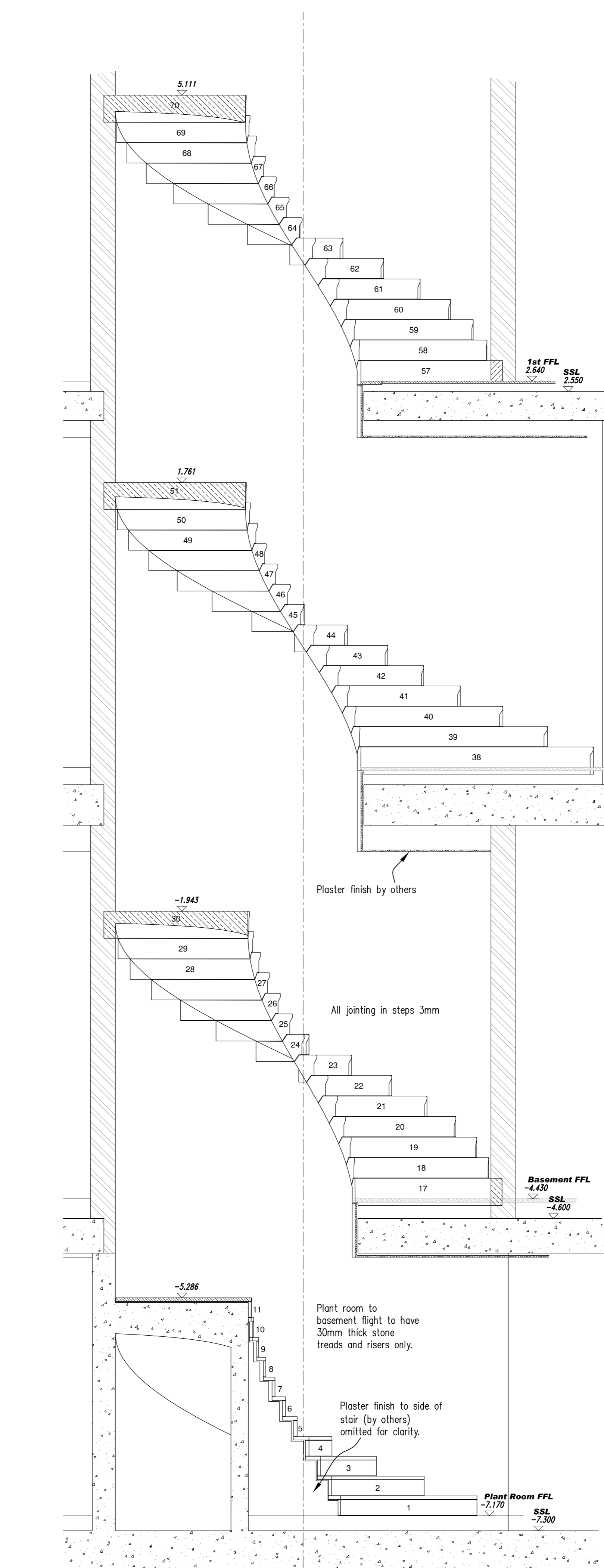
DETAIL D2  
typical tread detail 1:5



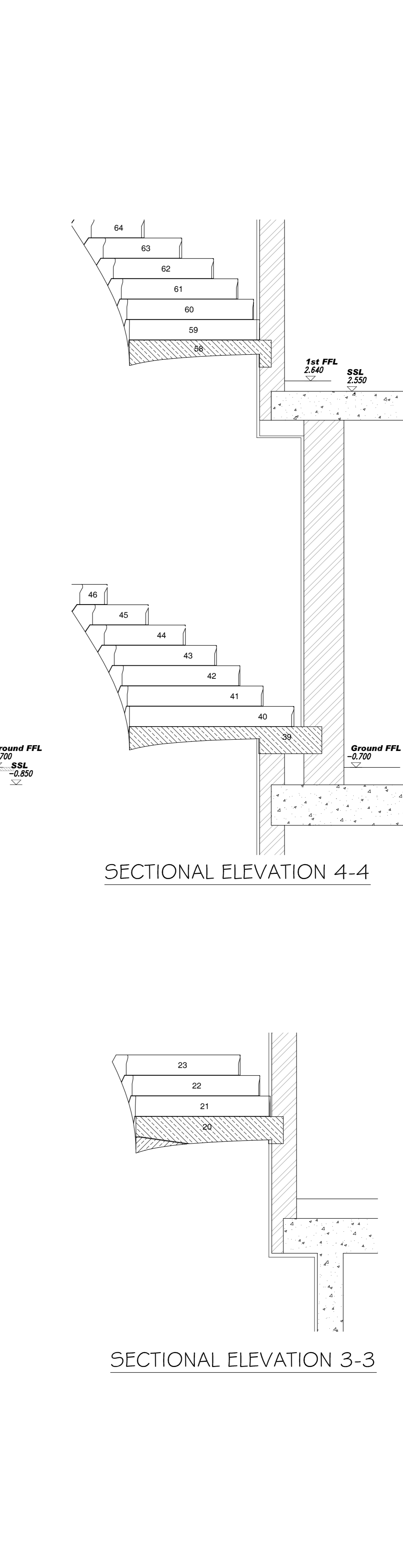
DEVELOPED SECTION THROUGH 'LINE OF GOING'



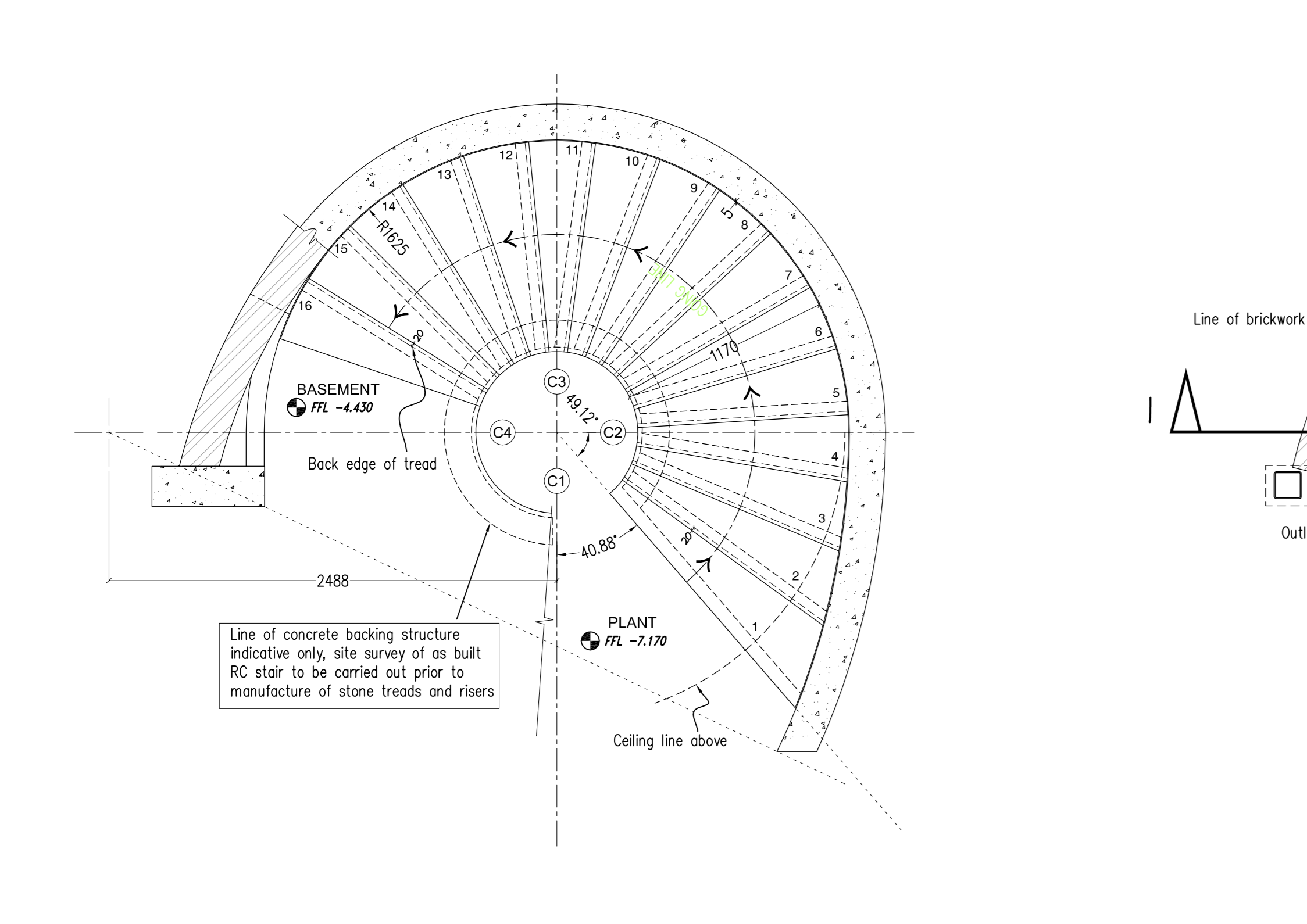
SECTIONAL ELEVATION 1-1



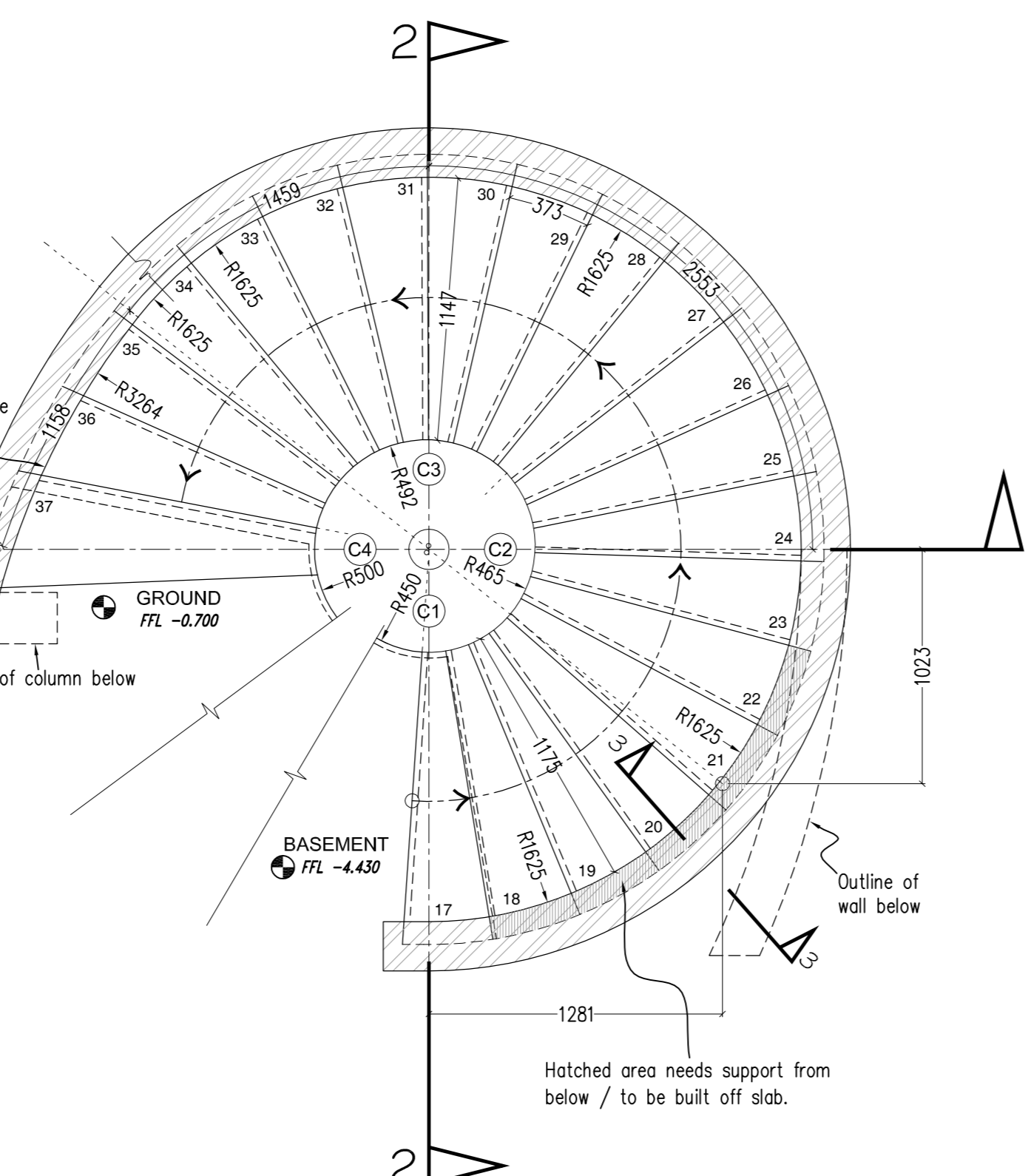
SECTIONAL ELEVATION 2-2



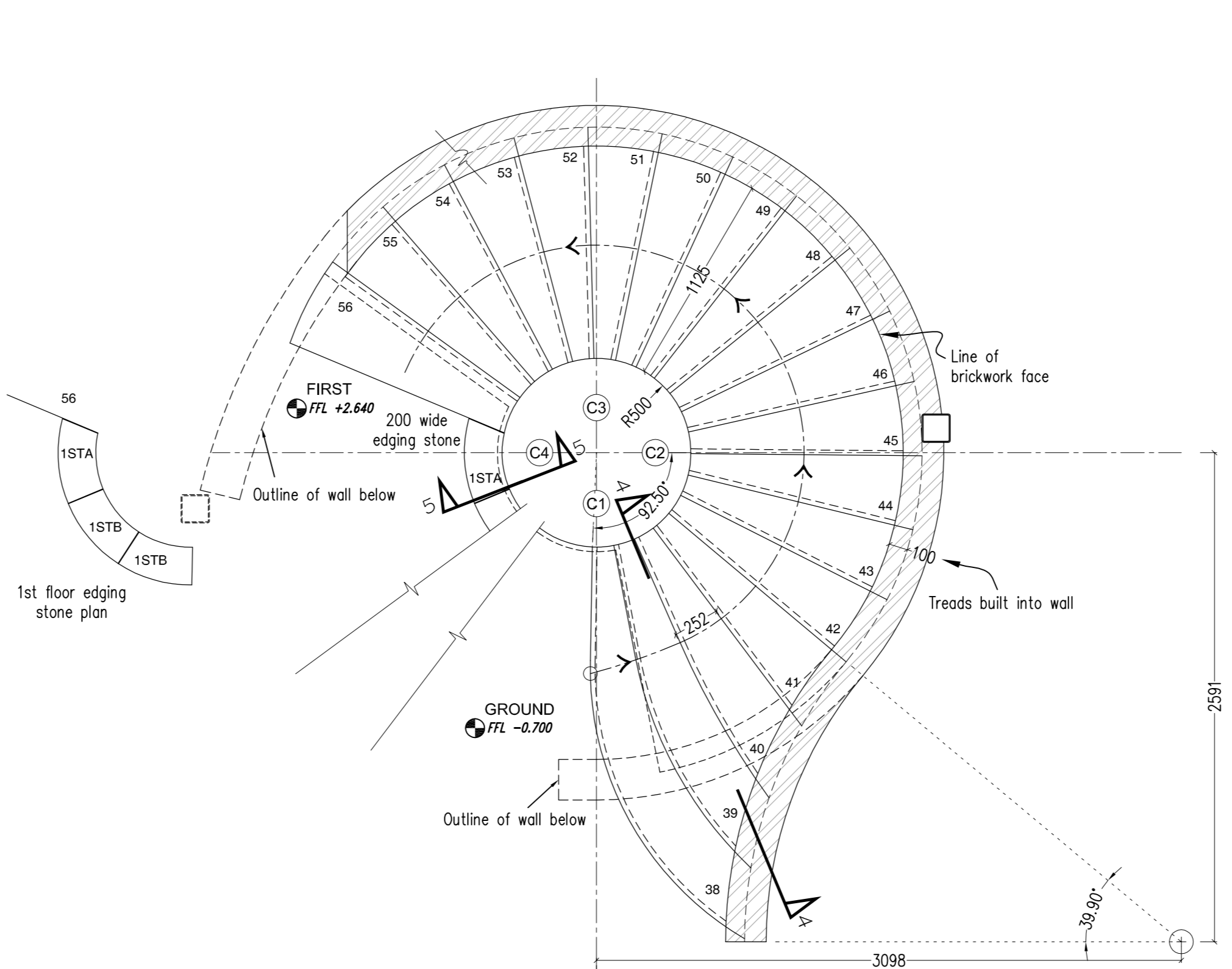
SECTIONAL ELEVATION 3-3



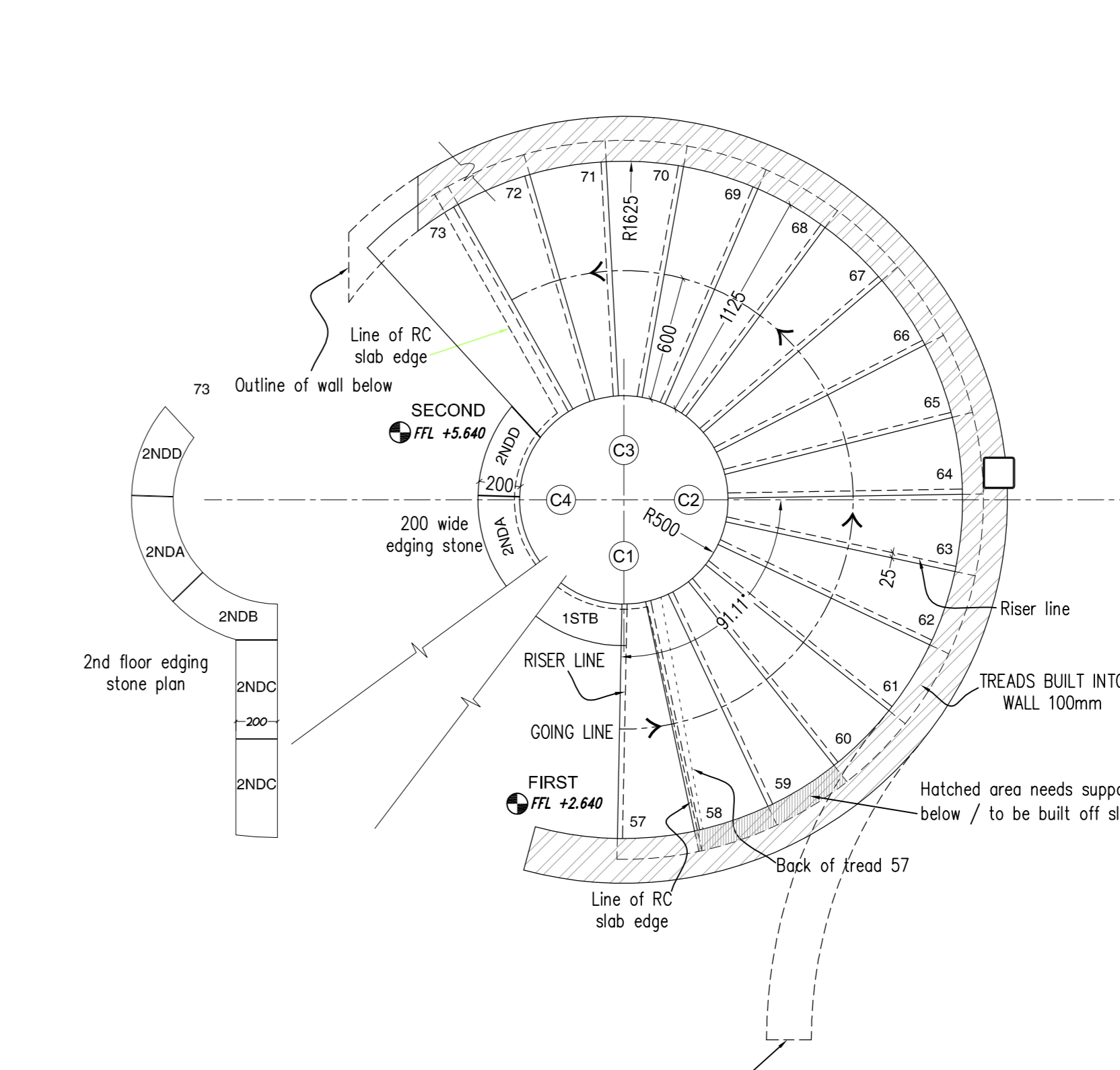
PLANT TO BASEMENT STAIR PLAN



BASEMENT TO GROUND STAIR PLAN



GROUND TO FIRST STAIR PLAN



FIRST TO SECOND STAIR PLAN

Rev.	Date	Comments	By	TA
A	13/10/09	Updated to comments		TA

**A. F. JONES**  
 33 Bedford Road  
 Reading  
 RG1 7EX  
 TEL: 0118 957 3537  
 www.afjones.co.uk  
 FAX: 0118 957 4334  
 E-mail: angusjones@ukonline.co.uk

**stewart design (uk) limited**  
 the old bakery, shop street, charlbury, oxford, OX7 3BR  
 tel: +44 (0) 1608 811500  
 e-mail: design@stewartdesign.co.uk  
 fax: +44 (0) 1608 811700  
 website: www.stewartdesign.co.uk

Project: **Stair 01**  
 Drawing Title: **Stonework details**  
 Drawing: **General Arrangement**  
 Date: Aug 2009  
 Scale: 1:25 @ A0  
 Drawing No: **0925-GA01**