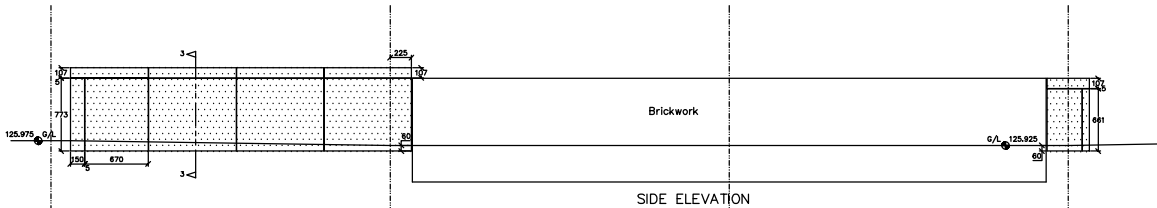
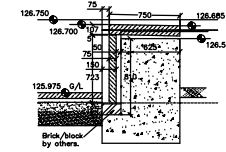


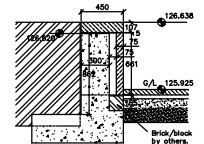
SECTION AT "3-3"
(See also D006/3-3)



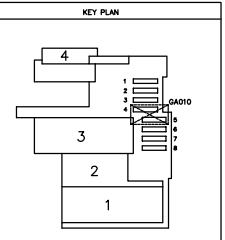
SIDE ELEVATION



SECTION AT "1-1"
(See also D006/1-1)



SECTION AT "2-2"
(See also D006/2-2)



NOTES

COPYRIGHT
Not to be reproduced without written permission.

= Details to be confirmed.

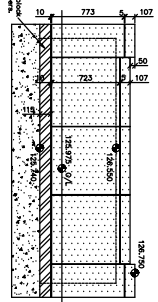
Read in conjunction with drawing No. 98097/006

This drawing has been prepared using Architects drawing nos:
229/20/213
229/20/214
229/20/215
And Engineers drawing nos:
955/10

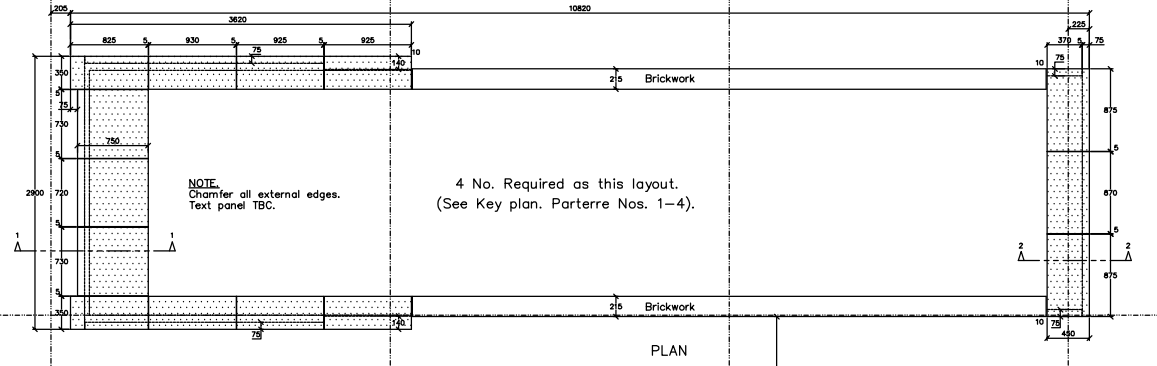
Stone type : Crosland Hill Yorkstone.

Joining material :
Mortar 1:2:8-9
cement:lime:crushed stone

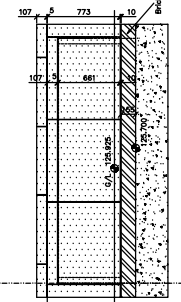
Stone number :



END ELEVATION "A"



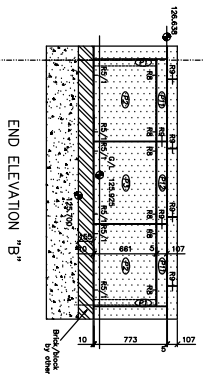
PLAN



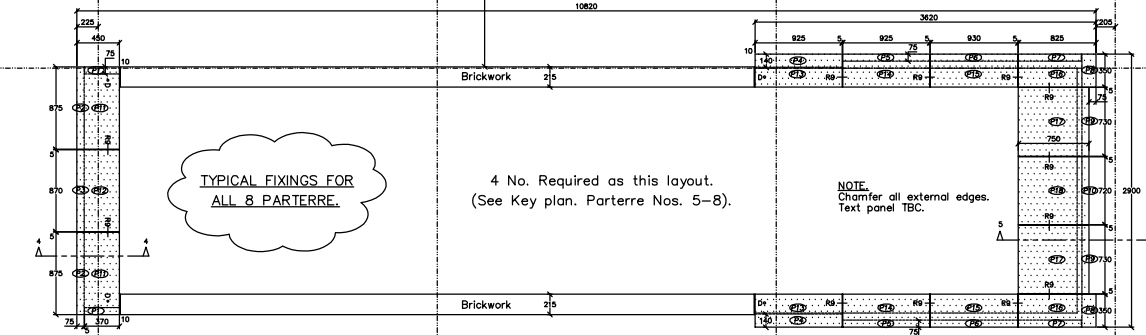
END ELEVATION "B"



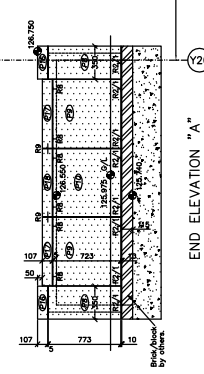
PLAN



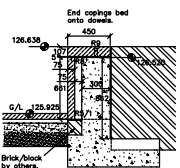
END ELEVATION "B"



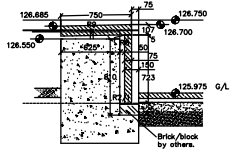
PLAN



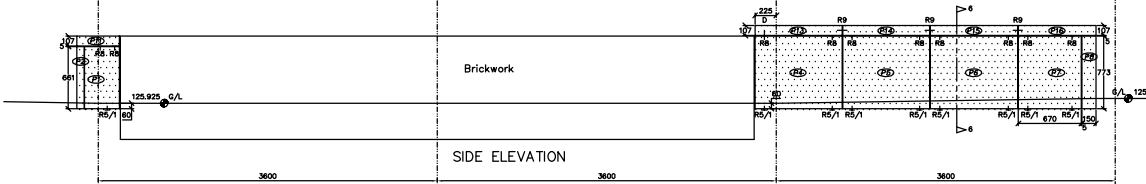
END ELEVATION "A"



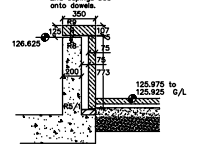
SECTION AT "4-4"
(See also D006/2-2)



SECTION AT "5-5"
(See also D006/1-1)



SIDE ELEVATION



SECTION AT "6-6"
(See also D006/3-3)

TYPICAL FIXINGS FOR ALL 8 PARTERRE.

FIXING TYPE KEY
D = Dowel
DC = Dog cramp
R2 = Restraint cramp (Type 2)
R2/1 = Ditto but capped (Type 2)
LB3 = Load bearing bracket (Type 3)
S4 = Soffit hanger (Type 4)

REV.	DATE	AMENDMENT
3	21/1/99	For scheduling purposes.
2	11/1/99	Flange added.
1	22/12/98	CONSTRUCTION ISSUE.
B	17/11/98	stanton williams comments incorporated. Also re-numbered.
A	9/10/98	stanton williams and Longley comments incorporated.

NOTE - DO NOT SCALE FROM THIS DRAWING

STATUS

Contract	Millennium Seed Bank		
Location	Parterre		
Architect	stanton williams		
Drawn by	NH		
Scale	1:20	Date	26.8.98
Order No.	98097		
DRG. No.	GA010		
Rev.	3		

